

ANNUAL REPORT 2017



CONTENTS

04

MESSAGE FROM THE
BOARD CHAIR

06

MESSAGE FROM THE
EXECUTIVE DIRECTOR

08

ABOUT THIS LIFE
CAMBODIA

10

CAMBODIA
IN CONTEXT

14

LOWER SECONDARY
SCHOOL DEVELOPMENT
PROGRAM

18

VOCATIONAL TRAINING
SOCIAL ENTERPRISE
PROJECT

24

THIS LIFE
BEYOND BARS

26

THIS LIFE
IN FAMILY

28

THIS LIFE
IN COMMUNITY

32

PROGRAM SYNERGY
AT ITS BEST

34

COMMUNITY RESEARCH
& CONSULTANCY
PROGRAM

38

FINANCIALS

PHOTOGRAPHY WITH THANKS TO:

Cover image & pages 5, 7, 11, 23, 32, 36: Kimlong Meng | Adjacent & page 19: Angela Cornish
Page 20: Julia Hocken | Pages 25 & 26: Erik Van Rensberg

MESSAGE FROM THE BOARD CHAIR



Welcome to the 2016-2017 Annual Report from This Life Cambodia. We are delighted to have completed another year of milestones in support of our mission: to listen to, engage with and advocate alongside children, families and communities.

With the support of two major new donors we fueled a significant expansion of our signature program, the Lower Secondary School Development Program. We also took a significant step forward in the evolution of our Community Research and Consultancy program (CRCP). While undertaking the monitoring and evaluation of all TLC programs, CRCP also acts as an external consultant to academic institutions and NGOs wishing to conduct their own program evaluations or research. This past year our team facilitated GHR Foundation's collaborative grant-making in Cambodia across seven grantee organisations. Guided by the theory of Collective Impact, the CRCP team serves as the 'backbone' to the GHR funded network by linking partners and supporting collaborative learning and innovation, sharing knowledge, and driving change.

We see great potential in continuing to expand our consultancy work. It contributes to the acquisition and dissemination of new knowledge for those working to improve the lives of ordinary Cambodians and, significantly, it is also an opportunity to develop and implement creative and consultative projects that serve as an income-generating stream for the organisation.

In this past year, we also undertook an externally-led assessment of the role and purpose of the Board of Directors. After ten years and extensive

growth in the organisation we wanted to ensure that the board's structure, responsibilities and range of skills were continuing to serve the organisation well. As a result of the assessment, a new board recruitment and development policy was crafted and four new board members were selected who bring a wealth of diverse experience to the organisation.

As we commence our 10th year of working in Cambodia, we want to extend our deepest gratitude to the many donors, friends and supporters who make our work possible. This is an exciting time for This Life Cambodia as we are poised to embark on the next ten years of innovation and impact in strengthening communities and families.

Mihajlo Starcevic



MESSAGE FROM THE EXECUTIVE DIRECTOR



As This Life Cambodia closes in on its 10th year of operations, I am gratified and inspired at how far we have come as an organization. Our programming continues to expand as we respond to issues voiced by communities. Yet, we have remained steadfast in our mission and our community-driven approach to development even as we have become a larger organisation.

Working side by side with community members, listening to their insights and acting on their input, we have developed a range of programs that provide direct services to children and families while also supporting and enabling communities to take action independently.

Our Lower Secondary School Development program, undertook a significant expansion this year with funding from the Phoenix Foundation and WISE Philanthropy Advisors. We are now actively operating in 11 communities in Siem Reap, directly impacting over 3,200 children and have successfully exited from four communities who continue to carry on the program independently.

A cornerstone of our organisational strategy is aligning our work with the government's strategic development goals. By working from within schools, prisons and other institutions we are building the capacity of local leaders to implement change and enable communities to address their development priorities.

When we started our innovative program for youth in prison, This Life Beyond Bars, Cambodia did not have a juvenile justice law. In 2016, this legislation was enacted and though it is yet to be implemented, we remain actively

involved in the three prisons in Cambodia that have the highest number of incarcerated youth. The program's blend of vocational and personal development training, individual case management, and family visits has resulted in an impressively low rate of recidivism amongst youth in the program. When we began, the reoffending rate was at 60% within six months of release and is now at 2%.

Whether it's working with communities to improve their schools, arranging visits of families to their children in prison or supporting families with a parent in prison to stay together, the thread that links our work is Family.

We firmly believe that children and families thrive when they remain together. When circumstances cause families to be at risk of separation, alternative solutions to institutionalization of children should always be sought. The vast majority of children in residential care in Cambodia have at least one living parent and the reasons many are in care are economic and for education opportunities.

This Life Cambodia is committed to addressing residential care reform in Cambodia alongside the government and other NGOs. We are an active participant in the USAID funded Family Care First initiative and our research



and consultancy arm was engaged by the GHR Foundation to implement a collective impact evaluation across GHR's grantees who are working on various aspects of residential care reform.

When I started This Life Cambodia it was with the mission to listen to, engage with and advocate alongside children, families and communities as they define and act on their own solutions to complex social challenges. All of our programs exist because we listen to communities voice their concerns, with education, migration, drugs, and domestic violence being paramount. In the hundreds of consultations with communities we have held since we began, never once, has a community expressed the need or desire for an orphanage in their community.

As an Australian registered NGO, I am heartened by the conversations and the initiatives taking place in our Parliament which are contemplating classifying orphanage tourism as a form of modern slavery. Recently, three major travel organisations that run student volunteer travel programs have announced they will no longer run trips to orphanages.

We are excited to be on the forefront of change, leading the conversations and bringing new thinking, and creative and innovative approaches to addressing these and other development priorities in Cambodia.

Billy Gorter

ABOUT THIS LIFE CAMBODIA

From Grass Roots Through to Policy Makers

Starting as a small grass-roots organisation in 2007 with a single program in Siem Reap, This Life Cambodia now delivers 6 programs in over 30 communities. We also operate a community research and consultancy arm which oversees our program evaluations, conducts original research and undertakes consultancies for other NGOs and academic institutions.

While our work is informed by community voices and aligned with their priorities we also work in partnership with government at the commune, district, provincial and ministerial levels. By ensuring our work aligns with, informs and supports national development goals, we can achieve lasting change. This unique approach ensures we are spanning from the grass roots up to policy makers.

Our programs have evolved based on the needs communities identify through our consultative processes. As a result, many of our programs are interlinked, which strengthens our impact. To ensure long term sustainability, programs are designed so that over time our involvement decreases as capacity and skills increase within communities.



VISION

This Life Cambodia's vision is for vulnerable children, families and communities in Cambodia to be supported to access and create opportunities in this life.



MISSION

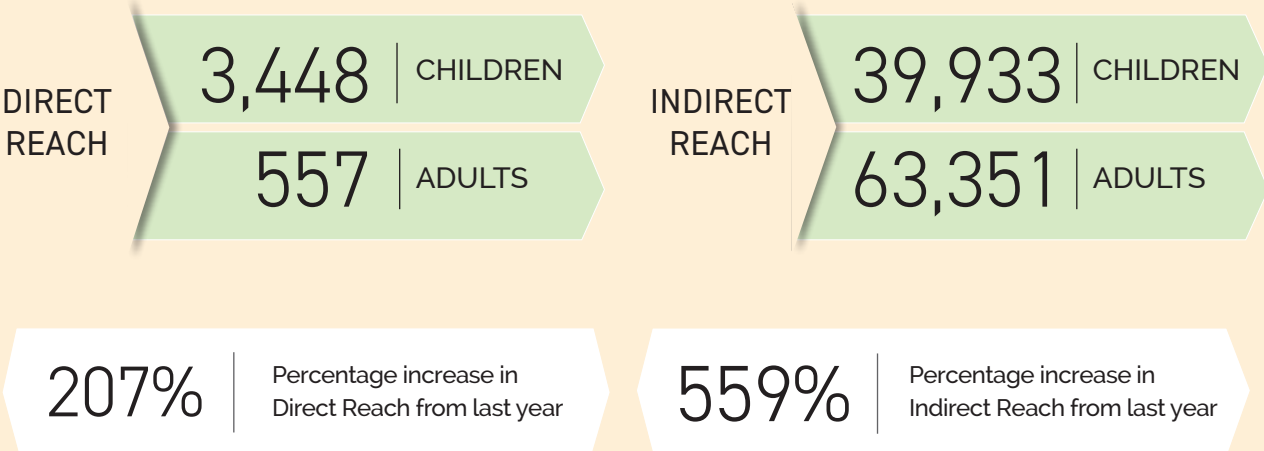
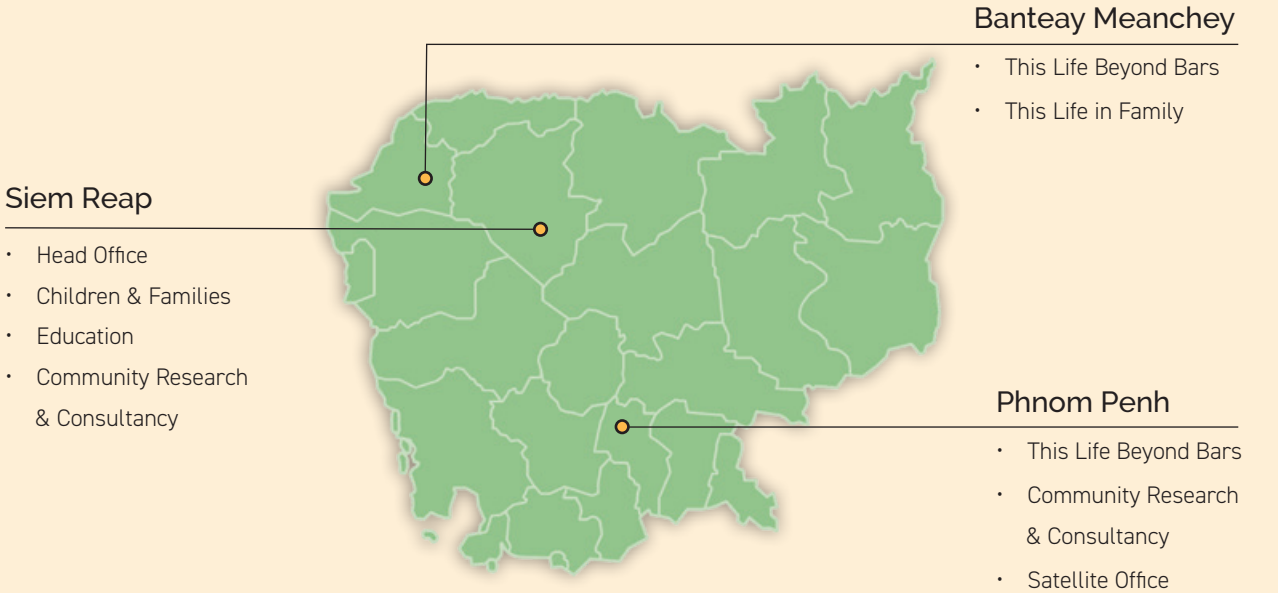
To listen to, engage with and advocate alongside children, families and communities as they define and act on their own solutions to complex social challenges



VALUES

- As an organisation This Life Cambodia will:
- Respect local culture and value local expertise
- Utilise rights-based and strengths-based approaches
- Contribute to evidence-based good practices
- Plan for sustainability, with clear entry & exit strategies
- Act with Integrity, accountability and transparency

This Life Cambodia Reach 2016-2017



Cambodia in Context



DEINSTITUTIONALISATION & FAMILY PRESERVATION*

48,775

Number of children
living in residential
care institutions

30%

Government aims to
return 30% of children
in care to their
families by 2019

77%

Percentage of
children in residential
care with a living
parent



15.76 M

Population (2016)



1,140 USD

Average annual income
(2016)

Reports claim that drug addiction in Cambodia had risen by nearly 30 percent by the end of 2016.



JUVENILE JUSTICE

1,046

Number of juvenile prisoners
in Cambodia

At the end of 2016, Cambodia's prison population stood at 21,989, 4.1% were juvenile detainees.

Approximately 30% of these children are being held in pre-trial detention and are held for extended periods prior to sentencing.

The highest number of juveniles are detained in Siem Reap, Banteay Meanchey and CC2 (Phnom Penh) prisons.

In late 2015, prisons were operating at 206% of their official capacity.

MIGRATION



223,000

Number of workers
migrating to Thailand

53,000

Number of people who
migrated from Siem Reap
in 2015



WHY WE WORK IN LOWER SECONDARY SCHOOLS

80.62%

of children
complete primary
school

3.8%

of children drop out
of primary school

40%

of children
complete lower
secondary school
(grades 7-9)

17%

of children drop out
of lower secondary
school (grades 7-9)



DOMESTIC VIOLENCE

20%

Women who experienced sexual
and/or physical intimate partner
violence at least once.

30%

Women who experienced a form of
controlling behavior by an intimate
partner.

* Sources: Columbia University Mailman School of Public Health: National estimation of children in residential care institutions in Cambodia (2017)
Ministry of Social Affairs, Veterans and Youth Rehabilitation/Unicef, 2016



THIS LIFE CAMBODIA

EDUCATION

Goal: To engage families and communities in supporting children to access their right to education and training opportunities in their community

LOWER SECONDARY SCHOOL DEVELOPMENT PROGRAM

In Cambodia, each primary and secondary school is required by the Ministry of Education, Youth and Sport (MoEYS) to have a School Support Committee (SSC) whose purpose is to assist in School Based Management (SBM), a development concept that is utilised globally.

In practice, each school collaborates with their community, taking responsibility for how the school is managed, budgets are spent and education is delivered.

MoEYS Strategic Plan 2014-2018 aims to increase enrollment in secondary education especially by girls and to promote community participation in the development of education. Their goal was to reduce the dropout rate from 20% to 3% by 2016-2017 but the 17% national dropout rate in 2015-2016 shows they are far behind.

The Lower Secondary School Development Program (LSSDP) is our response to strategically improve access to education, reduce dropout rates and promote quality of education at the lower secondary school level. Using the tools of community organizing and group decision-making, the LSSDP helps School Support Committees (SSCs) develop skills to engage

their community in improving their school and raising awareness of the value of education.

An empowered community where education is discussed and where there is a strong sense of ownership:

- motivates students to study (students achieve better results when their parents and communities are involved in their learning);
- contributes time, funds, materials and human resources to school development projects;
- has a voice in school decision-making, ensuring that schools are running well and school development meets their priorities and;
- values education despite the pressures and challenges of poverty.



To ensure that school development is community-led and sustainable, the program depends on strong and active relationships between This Life Cambodia, provincial, district and local government, and the school community.

During the three year program cycle, school development priorities are chosen by the School Support Committee (SSC), in partnership with the community. Priorities vary but may include building teacher housing or libraries, refurbishing classrooms, building or upgrading toilets, constructing sports grounds, or planting gardens. The LSSDP team's role is to support the SSCs through capacity building, technical advice, materials, funding and other support.

After 6 years successfully implementing LSSDP in four communities and demonstrating its sustainability, we undertook a significant expansion last year into 11 communes in Siem Reap province with the generous support of the Phoenix Foundation and WISE Philanthropy Advisors.

In choosing schools, we consult with the provincial and district offices of education for referrals and apply a range of selection criteria including high dropout rates, low enrollment rates, and the absence of other NGOs working in that school.

Beginning with the community consultation process which involved 1,166 community members including teachers, parents and students, the 11 communes collaboratively identified their school development priorities.

We conduct five core training modules with the School Support Committee (SSC) on topics such as communications, fundraising, proposal writing, and also offer flexible training sessions based on topics SSCs identify such as leadership and school budget management.

Enrollment and education awareness raising campaigns are held annually to ensure education is a topic of conversation in the community. In each year of the three year cycle, our teams gradually transition responsibility for leading activities to the School Support Committee so when we exit, they are fully able to manage and lead the program.

School exchange visits are a vital component of the program. The visits are influential in demonstrating to School Support Committee members what is possible to achieve with their involvement. By learning from their peers and sharing knowledge and experience a support network evolves and successful strategies can be shared and replicated. Exposure to other well-functioning schools supplements and reinforces the work TLC undertakes as part of our training programs. This peer network also contributes to the LSSDP's long term sustainability once we have exited the community.

In this first year of the program in these 11 schools, communities engaged 3,390 participants in education awareness campaigns. Parents and other community members are invited to see the schools and understand how they can contribute towards school improvement. These events also provides a forum to address the importance of education, and reduce dropout and absenteeism rates.

An important indicator of success for LSSDP is decreased dropout rates.

After one year in the 11 schools we have seen an aggregate decrease in dropout rates of 30.35%. Through a combination of high engagement by School Support Committees, education awareness campaigns, and cooperation with other local entities there is a collaborative effort by the community to identify children at risk of dropping out and intervene to prevent that from happening.

As these communities enter their second year of the program, School Support Committees will be reviewing their roles and responsibilities, strengthening capacity of the Student Councils, and empowering members to be leaders. A new initiative underway is focused on engaging Student Councils more effectively and inspiring them to become actively involved in their schools. Tapping into the energy of youth in the community and including their ideas and perspectives introduces a new set of voices into the program. It is also an opportunity to develop student's skills in leadership, collaboration, communication and problem solving.





VOCATIONAL TRAINING SOCIAL ENTERPRISE PROJECT

The one year program enrolls 16 students and, as well as vocational training, includes personal development training.

A case manager works with each student and their family to set personal and professional goals and plans for starting a business or seeking employment when they graduate. The goal of Moto Doctor is to enable these young people to seek further employment independently (or with the help of This Life Cambodia), to establish their own shops, and potentially provide employment to others.

From the outset, we determined that Moto Doctor should operate as a business so that training would occur in a real life retail business environment. In this way, students are getting hands on experience in not only moto repair but in managing a business and dealing with customers. This also aligns with the government's "Standards and Guidelines for the Care, Support and Protection of Orphans and Vulnerable Children" which states: "Vocational training programs should provide job placement and follow up. Where possible, placements should be in existing businesses in local communities.

In December 2016, 16 students graduated from the Moto Doctor program. Three students opened their own moto repair shops with seed funding provided by the project. Five students are employed as mechanics in other shops, two are completing their secondary school education and work part-

time as mechanics and three continue on as apprentices at Moto Doctor.

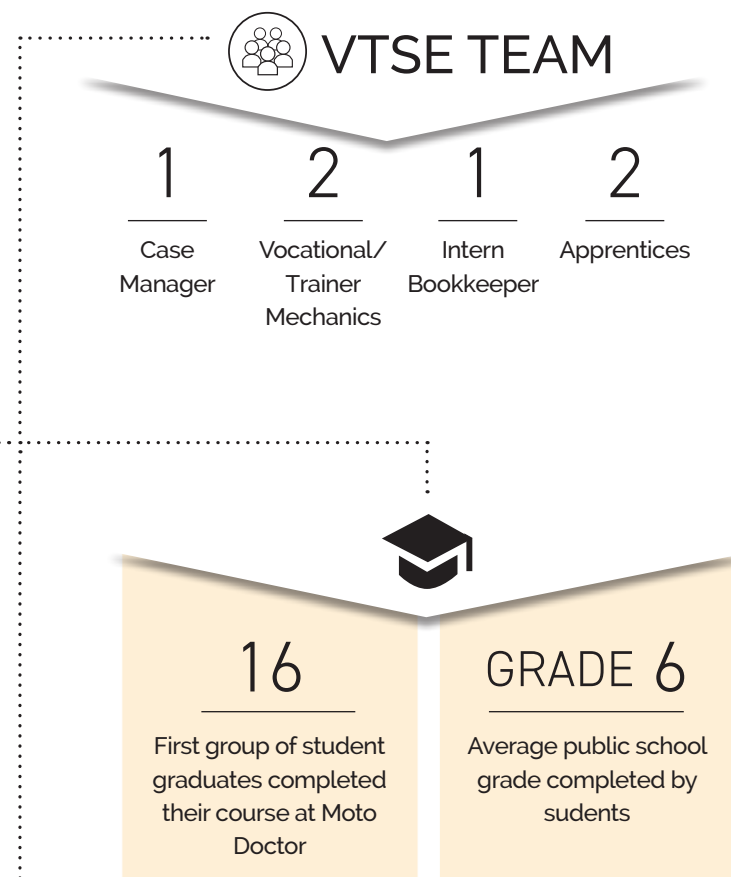
As an organisation that prizes evaluating and learning from our experience, we are adjusting some of the expectations that we had for Moto Doctor. After a full year of operations, we learned that the model works in terms of its social mission. Graduates of the program have either started their own businesses or have found works as mechanics. The social mission also resonates with the customer base which includes locals, expats, NGOs, tour companies, micro-finance institutes and banks. As of January 2017, about 60% of the total revenue comes from locals; 23% from expats, 10% from tour companies and 8% from NGOs.

As a social enterprise, revenues from Moto Doctor provide partial funding for the project but we are not sure we will ever be fully self-sustaining. This is a challenge that many social enterprises encounter and it is likely we will continue to require donor funding in order to deliver the full suite of support that we are committed to: vocational training, personal development training, individual case management and post program support in seeking employment.

We continue to explore options for growing the business and attendant revenues. We are optimistic that by building on Moto Doctor's reputation, increasing our marketing, expanding business partnerships and potentially adding more services or even a second location we will be able to grow the business without sacrificing the social mission.

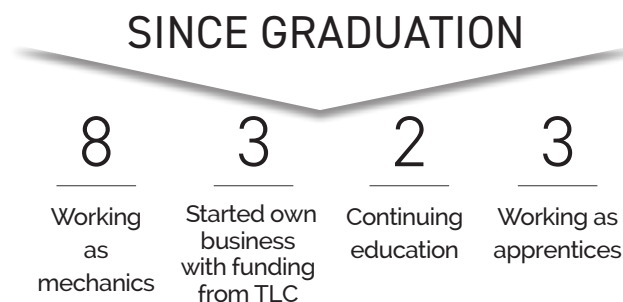


Our vocational training social enterprise teaches moto repair skills in a real business environment



12 MONTHS
Length of Government Certified Vocational Training Course

15-23 YEARS
Age range of students



LSSDP



3,233

Children enrolled in grades 7 to 9 participating in and benefiting from school development led by their community.

1,166

Community members and parents consulted about their priorities for education and school development



171

School Support Committee Members with increased capacity to lead school development and promote education

\$21,575

Raised by 11 schools from within their communities for school development projects



37,456

Children of all ages benefiting from increased value of education in their communities



THIS LIFE CAMBODIA

CHILDREN & FAMILIES

Goal: For children to be protected and supported to remain within or return to their families and communities

THIS LIFE BEYOND BARS

This Life Cambodia's vision is of safe, nurturing family-based care for every child in Cambodia.

Last year we undertook a strategic realignment of the This Life Beyond Bars Program (TLBB) into three separate, but related programs: This Life Beyond Bars, This Life in Family and This Life in Community. Each program has a distinct focus, while sharing an overall goal of protecting and supporting children to remain within or return to their families and communities.

Our flagship TLBB program provides a comprehensive framework of support to incarcerated juveniles. Cambodia enacted its Law on Juvenile Justice in February and has acknowledged the United Nations Convention on the Rights of the Child in its constitution, yet children between the ages of 14 and 18 continue to be tried under the adult system. Operating in the three prisons with the largest number of juvenile detainees, TLBB increases the skills, knowledge and family connections of children in prison. With the goal of preparing for life after prison, activities include vocational and personal development training and monthly family visits.

Combined with post-release support, these activities ensure a successful transition for juveniles back to their communities and a low recidivism rate.

In 2016, in partnership with the International Committee of the Red Cross (ICRC) and the General Department of Prisons (GDP) we expanded into Phnom Penh effectively doubling the number of beneficiaries in the TLBB program. With continued funding from World Childhood Foundation, the programs in Siem Reap and Banteay Meanchey have seen a total of 137 juveniles graduate from the program since its inception in 2010. 100% of these students were successfully reintegrated with their families and many have gone on to set up small businesses. The remainder are employed in areas as diverse as farming, retail, security and the military. The strongest outcome of the program to date is the recidivism rate. When the program began in Siem Reap Prison 60% of juveniles released from prison were reoffending within the first 6 months. The recidivism rate of students who complete TLBB and return to their community sits at only 2% within the first 6 months, and 4% in total.



THIS LIFE IN FAMILY

This Life in Family (TLIF) supports and preserves vulnerable families at risk of separation through short-term, early intervention responses at the point of a parent or juvenile coming into conflict with the law (Family Preservation Project) and in parallel provides longer-term support for families with a parent already in prison (Family Support Project).

This two-pronged approach to tackling child-family separation ensures children access their rights to safety, protection and education while remaining in the care of their families.

Family Preservation: In close cooperation with sub-national committees and authorities, we advocate for the arresting authorities to uphold the rights of the individual and act in accordance with legislative frameworks at the point of arrest and detention. The establishment of familial networks and/or community-based care options for children is paramount and any immediate needs are met through providing emergency packages. Cases are carried for a maximum of 12 months in order to put the necessary supports in place around the individual and their family from the outset and enable them to navigate the system for themselves.

The Family Preservation team accepted its first case in January 2017 and has received 11 further referrals, many of which came from community

members themselves. In accordance with our selection criteria, we supported nine of these cases, producing many successful outcomes including directly preventing the institutionalisation of two children.

Family Support: This project provides assistance to the children of parents detained in Siem Reap Prison. With support for a period of up to three years, we work closely with the primary caregiver of the children. Educational scholarships allow children to regularly attend school, achieve academically and prevent/reduce dropout. Income generation activities increase the financial sustainability of families and are based upon the strengths, skills, and capacities of the caregiver. Health care allowances and emergency care packages are available to ensure the basic well-being of the families is covered in times of crisis. The promotion and enhancement of family connections is vital and the program provides supported monthly visits to the parent in prison.

The Family Support project continued its longer-term support of 25 families with a parent in prison, providing 52 children with education scholarships and establishing multiple income-generating activities. This year has also seen the formation of partnerships with other local NGOs to increase the levels of support by way of disability services, solar power and additional income generation activities.





THIS LIFE IN COMMUNITY

In order to mobilize community support for children and families at risk of separation, This Life in Community (TLIC) builds the capacity of commune structures to respond to issues that impact children and families. (In Cambodia a commune administers a group of villages.)

The program works with vulnerable communities to ensure that community-based care options are prioritised over residential care institutions (orphanages) in cases of child-family separation.

We have made substantial progress in increasing awareness about child protection and the prevention of child-family separation. Strong connections between project staff and their community counterparts, has led to high levels of engagement, enthusiasm and cooperation. Another impact of This Life in Community is that our This Life in Family program has experienced an increase in referrals. The synergies between our programs maximises the impact of our work, in addressing similar issues on multiple levels.

In 2016, we became actively involved in a global, collective impact initiative funded by USAID - Family Care First Cambodia (FCFC). FCFC is comprised

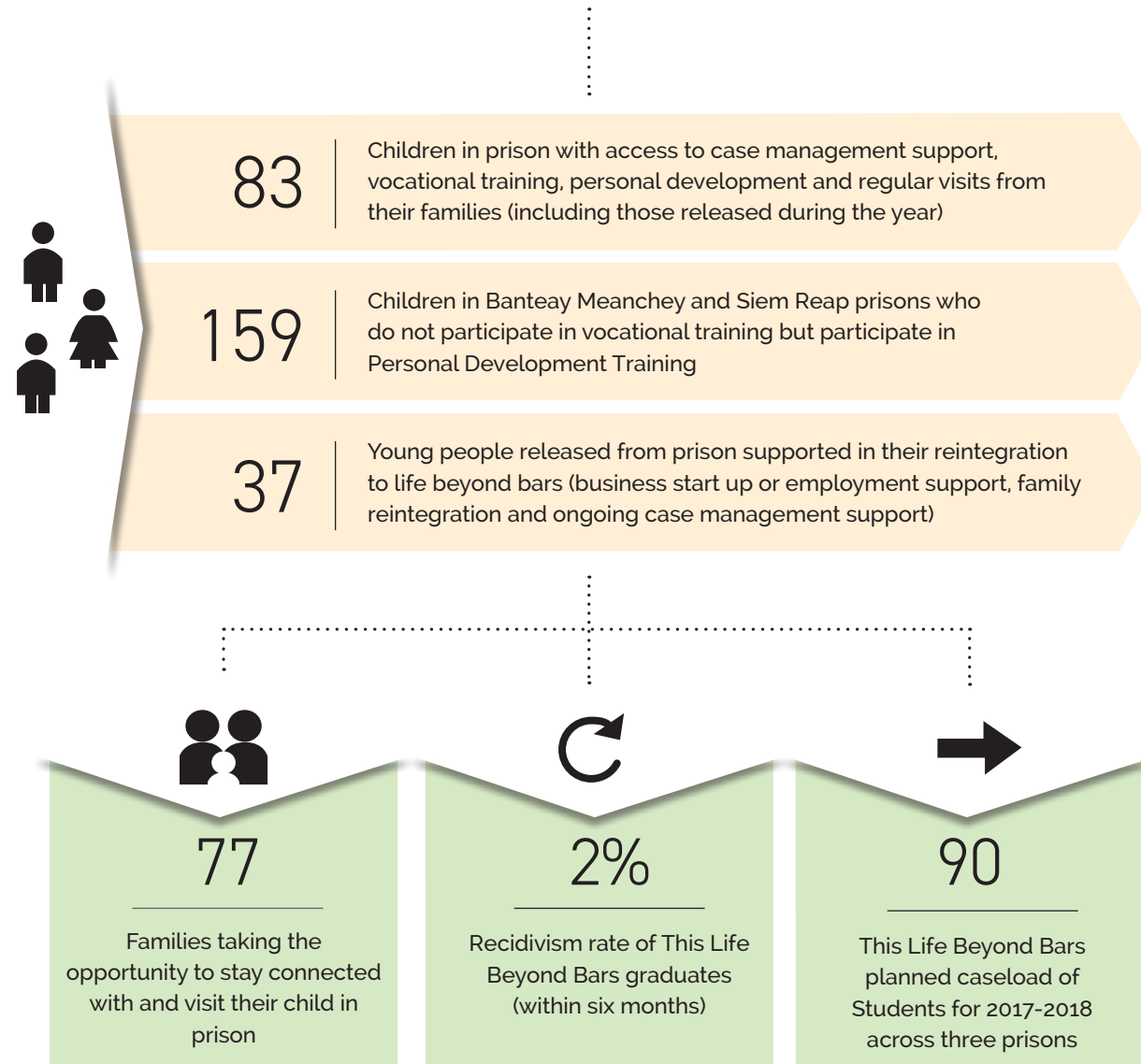
of organisations committed to increasing the percentage of children living in safe, nurturing and family-based care.

International Women's Rights Day

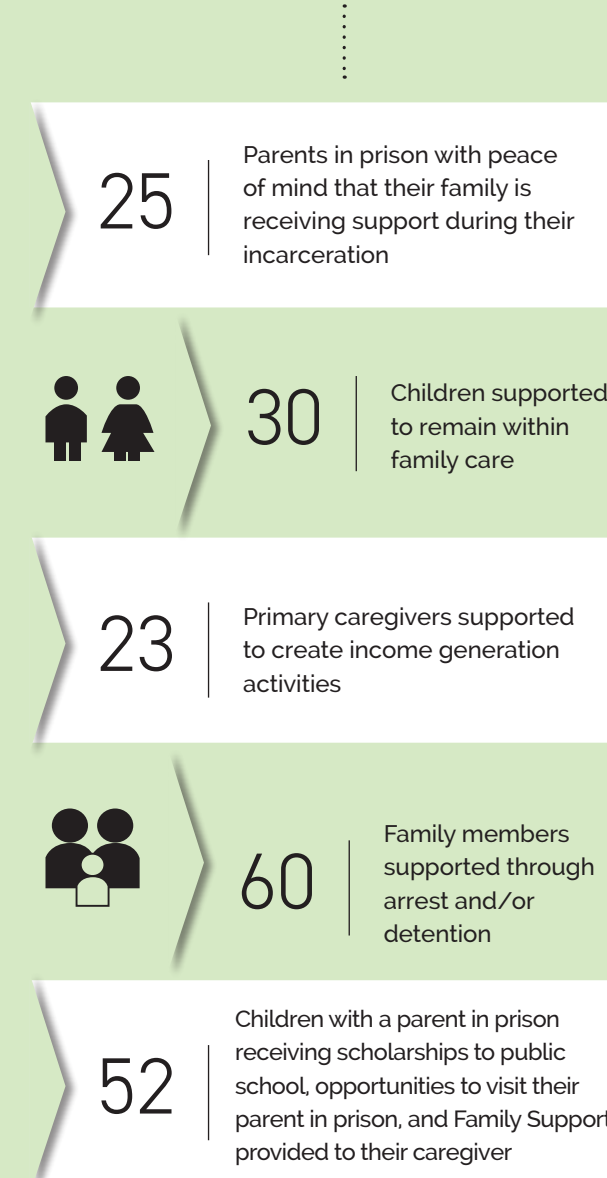
This Life in Community facilitated International Women's Day events in two communities where we work. As the first of what will become annual events for both communities, enthusiasm was high and crowds rallied, many of whom were children from the local primary and lower secondary schools.

Attendees were invited to participate in a 'Question and Answer' session on problems and suggested solutions affecting women and children in their community. A 9-year-old schoolboy, volunteered to step up before the audience and answer a question relating to the root causes of domestic violence in his community. A poignant moment in his response was when he requested that people 'stop gambling', which was met by resounding applause throughout the room, particularly from fellow students. This illustrates the power of providing a platform and participatory voice to younger generations, many of whom already have a clear sense of solutions to entrenched problems within their community.

TLBB



TLIF



TLIC



PROGRAM SYNERGY AT ITS BEST

This Life Beyond Bars, This Life in Family and This Life in Community share a common goal of supporting children to remain within or be reunited with their families.

Each of these programs though linked, delivers a distinct set of services to children, families and communities. Program synergies enable us to be flexible in scaling and broadening the scope of our programs while also exploring and strengthening the links between our programs.

A local family living in the Angkor Archaeological Park was referred to This Life in Family through our This Life Beyond Bars program. The father had been in Siem Reap prison for two and a half years and due to substance abuse issues his wife was unable to care for their five children. They went into the immediate care of their 76-year-old grandmother but the family was living in desperate conditions with no proper shelter or income. This Life in Family provided much needed support to keep the family together

and improve their situation. The local community rallied and with materials purchased by TLC, a home was built to provide shelter and protection. The youngest child, a hearing impaired girl, was supported to attend a special school where she is learning sign language and starting to communicate with those around her. Her brother and sister were able to return to school and the eldest son was assisted to find volunteer work to build his skills and find paid employment.

The grandmother was assisted to set up her own food stall outside of Angkor Wat. She is able to support the family while still having time to look after her grandchildren. This business will continue to support the family after the father is released from prison and the family is reunited.

The grandmother is a hero; especially to her grandchildren. She believed that keeping the children together in their community, was the best choice for them to grow and develop. Her dream is for her grandchildren to receive a good education and have good job opportunities in the future.



COMMUNITY RESEARCH & CONSULTANCY PROGRAM

Listening to community voices and engaging with community members is at the heart of This Life Cambodia's work. Research, understanding and evidence is central to ensuring that our mission and values drive all that we do, translating community voices into progressive action.

The Community Research & Consultancy Program (CRCP) conducts research, monitoring and evaluation (M&E) to enable evidence-based programming and assess program impact both within This Life Cambodia as well as other organisations seeking to conduct research or enhance their own programs.

In collaboration with TLC program staff, CRCP conducts and oversees the monitoring and evaluation of all TLC programs. We also design and conduct research on topics that emerge from TLC program areas and from themes that emerge from the participatory rural appraisals that we conduct in communities in which we work. This Life Cambodia's commitment to the importance of self-assessment, learning and development is evidenced in the work of CRCP.

Our consultancy work includes research support, design and implementation for civil society organisations, NGOs and university research teams. CRCP's work develops key knowledge bases and shares evidence of good practices amongst civil society organisations working across the education, juvenile justice, social welfare and human rights sectors.

Collaboration, partnership and cooperation was a strong theme underpinning the work of the CRCP team in 2016-17 as we work to contribute to rights-based social development that improves the lives of children and families in Cambodia and beyond. We continue to strive to innovate in how we undertake data collection and research and are investing in the tools, systems and processes for collecting, managing and presenting information in the most effective way possible. We participate in the USAID Family Care First Cambodia Initiative for complementary alignment of efforts, and to share knowledge and expertise on the development and implementation of collaborative processes for measuring collective impact. For more examples of the work we are undertaking, please turn the page.



COMMUNITY RESEARCH & CONSULTANCY PROGRAM



CRCP worked with Newcastle University, Australia to produce academic discussion papers on: Out of Home Care and the Phenomenon of Western Voluntourism and Institutional Care which Prevails in Cambodia; Mothers with Children in Prison, and Juvenile Justice and Alternative Sentencing by examining these topics in the Cambodian and Australian contexts.



NGO EVALUATION

CRCP conducted an evaluation for an NGO which works to improve literacy and numeracy through its support of ten primary schools in Cambodia. The in-depth study assessed school performance, school challenges and community engagement in order to better understand operations, and impact and inform the NGO's future programming.

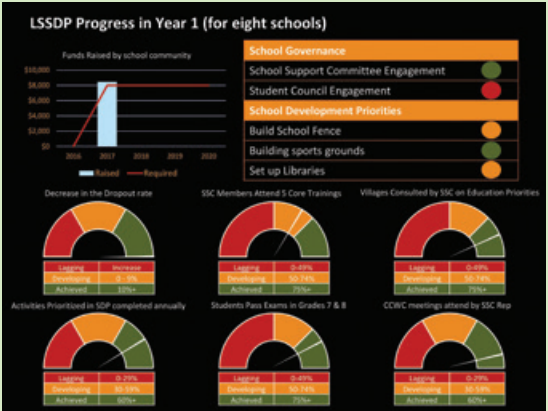
COLLECTIVE IMPACT

An exciting new project this year is a Collective Impact focused M&E consultancy launched by the GHR Foundation. The project fosters collaboration across seven grantee NGOs working on residential care reform through family or community-based care models with the goal of preventing family separation.



ADVOCACY TOOLKIT

Contracted by the NGO Education Partnership organisation, CRCP investigated government school practices in Siem Reap to identify how collaboration between school management and local and national government could be enhanced. An Advocacy Toolkit was produced to share best practices and support schools and local government in implementation.



DATA VISUALISATION

Over the past year, CRCP has also introduced innovative approaches to presenting program data. Through the 'data visualisation' initiative, information on the status of program components facilitates internal monitoring and provides a clear snapshot of progress for stakeholders.

FINANCIALS

2016 – 2017

BOARD OF DIRECTORS

Mihajlo Starcevic - Board Chair
Abbey Richards - Vice Chair
Claire Coxon - General
Alan Morgan - Secretary
Danielle Notara - General
Shelley Walker - General
Casual Vacancy - Treasurer

SENIOR MANAGEMENT TEAM

Billy Gorter, Executive Director
Se Chhin, Deputy Director
Somalita Keo, Chief Financial Officer
Fran Schreiber, Development Coordinator
Ruth Whereat, Children & Families Section Lead
Borany Chea, Education Section Lead
Jeni Gwynn, Community Research & Consultancy Section Lead

PRINCIPAL BANKER

ANZ Royal Bank

AUDITORS

APV Cambodia Co. Ltd., Certified Public Accountants

MAJOR PROGRAM DONORS

GHR Foundation
Harnessing Opportunities through Play and Education
International Committee of the Red Cross
Phoenix Foundation
Stars Foundation
Union Bancaire Privée
WISE Philanthropy Advisors
World Childhood Foundation

VALUED PARTNERS

B1G1 Business for Good
Box of Hope
Project Happy Feet
Uncle May

Thank you to our major donors, partners and our global community of individual supporters.

	01 SEPTEMBER 2016 - 31 AUGUST 2017	01 SEPTEMBER 2015 - 31 AUGUST 2016
Support & Revenues		
Grant income	512,734	219,397
General donations	97,045	119,331
Other income	54,565	13,871
Internal charge M&E	24,346	15,045
Revenue from service	11,070	17,365
Moto Doctor Income	19,679	--
Income released from capital grants fund	5,243	920
	724,682	385,929
Expenses		
Central office and core costs (Organisational promotions and capacity fund, assets and equipment, operational salaries and capacity building)	29,086	28,500
Programs	630,972	346,386
	660,058	374,886
Net changes in assets	64,624	11,043
Net assets, beginning of the year	58,544	42,706
Adjustment	--	4,795
Net assets, end of the year	123,168	58,544

NOTES TO FINANCIAL STATEMENTS

This table provides a summary of the Statement of Activities for 1st September 2016 to 31 August 2017. This Life Cambodia is externally audited each year. The full audit report for 2016-2017, including cash flows and breakdown of expenses by program is available upon request.

JOIN OUR COMMUNITY

For children, their families, and their communities in Cambodia.

 facebook.com/thislifecambodia

 thislifecambodia.org





thislifecambodia.org